

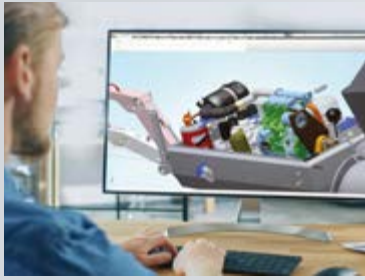


# SCREED MACHINES

Development – Production – Marketing



**PRODUCT CATALOGUE | OVERVIEW**



CONSTRUCTION  
AND DEVELOPMENT



PRODUCTION  
MADE IN GERMANY



REPARATION, SERVICE,  
MAINTENANCE



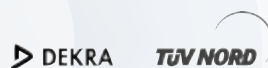
COMPREHENSIVE  
SERVICE

## CONTENT

	Page
<b>Screed machines – diesel (pneumatic conveyors)</b>	5
BMS alpha CR	6
BMS alpha Z3	8
BMS alpha Z4	10
BMS alpha CR Styrofoam	12
<b>Screed machines – electric motor (pneumatic conveyors)</b>	15
BMS alpha E32 VARIO	16
BMS alpha E63 Plus	18
<b>Fluid screed machines (screw conveyors)</b>	
BMS alpha CR FLUID (diesel)	20
BMS FLUID E32 (electric)	22
BMS FLUID E63 (electric)	24
<b>BMS special machinery for screed installers</b>	
BMS compulsory mixer for construction and industry	26
BMS silo machines	27
<b>Special paintings/Customer labelling</b>	28
<b>Additional equipment</b>	29
<b>Fully automatic screed systems for cement and fluid screed – new product line</b>	31
BMS TITAN F	32
BMS TITAN Z	34
<b>International demand</b>	36
<b>Contacts</b>	38

DEKRA- and TÜV-base

Our premium partners





## **BMS – THE EXPERT FOR FLOOR SCREED MACHINES.**

We develop, construct and sell floor screed machines and fully automatic screed systems. Our machines have been brought to perfection in every detail and deliver high performance on a daily basis.

BMS is known for innovation, technical competence, reliability and quality as well as for expert service and personal support. A seal of quality for professionals around the world – a point of honour for us: our products are “made in Germany”

Since the foundation of our firm in 1999 we have been active on an international scale. Our machines have been working reliably and with great success in more than 40 countries around the globe. Our dynamic corporate development confirms our significance in the industry. BMS is 100 percent family-owned.

BMS management team (f. l. t. r.) Gisela Kerger, Lukas Kordtomeikel, Marion Voß, Felix Kordtomeikel.









BMS SETS STANDARDS.

## **ALPHA SCREED MACHINES DIESEL MODELS.**

### **FIRST-CLASS WORKMANSHIP**

high quality, functional and robust.

### **LONG-LASTING STAINLESS STEEL HOODS**

enormously sturdy with a high-class visual appearance.

### **PERFECT PERFORMANCE**

due to the powerful 3-cylinder Deutz engine  
and the made-to-measure BMS compressor.

### **ECONOMICAL**

at attractive pricing.

### **GROUND-BREAKING PATENTED COOLING SYSTEM**

better cooling performance via two hydraulic fans.

### **HIGHEST SECURITY STANDARD**

tested and certified in accordance with German TÜV proceedings.

### **BEST NOISE/ ENVIRONMENTAL PROTECTION**

low emission engine, significantly reduced outgoing air noises of the fan.

## ALPHA CR. POWERFUL – EFFICIENT – ECOLOGICAL.

The alpha CR is the latest top product from BMS. Technically brilliant and powerful. It meets the new EU emission regulation Stage V.

The machine is equipped with a robust 44,5 kW DEUTZ engine and a high-performance compressor. Due to its 2,2 litres displacement, the DEUTZ diesel engine disposes of a high torque. On the construction site, the alpha CR may be operated in economic or powerbull mode, depending on individual requirements. In economic mode, the alpha CR is particularly silent, very ecological and operates fuel-efficiently.

At the push of a button, the powerbull mode may be switched on. The air capacity then mounts to 6 m<sup>3</sup>/min and the pumping capacity surpasses that of a conventional 4-cylinder-machine. Naturally, the alpha CR is equipped with the tried and tested BMS cooling system. It is indispensable for tough jobs on the construction site in all weather conditions.



Two in one with DEUTZ Common-Rail-Technology. More power at the push of a button, operates reliably, ecologically and fuel-efficiently in economic mode.



## TECHNICAL FACTS

	STANDARD	FEEDER	FEEDER / SCRAPER
Conveyance pressure	8.5 bar	8.5 bar	8.5 bar
Conveying distance*	200 m	200 m	200 m
Conveyor height*	30 Floors	30 Floors	30 Floors
Compressor	BMS up to 6 m <sup>3</sup> /min	BMS up to 6 m <sup>3</sup> /min	BMS up to 6 m <sup>3</sup> /min
Drive motor	DEUTZ TD 2.2 44.5 kW	DEUTZ TD 2.2 44.5 kW	DEUTZ TD 2.2 44.5 kW
Chassis/Axle	2,000 kg	2,000 kg	2,000 kg
Weight (depending on equipment)	1,760 kg	1,830 kg	1,980 kg
Length	4,620 mm	4,830 mm	4,830 mm
Width	1,555 mm	1,555 mm	1,555 mm
Height	1,585 mm	2,360 mm	2,700 mm
Fill level	920 mm	450 mm	450 mm
Max. grain size	16 mm	16 mm	16 mm
Pressure joint	VT 70	VT 70	VT 70
Feeder volume	–	310 litres	310 litres
Tank capacity	75 litres	75 litres	75 litres

\*The data is based on experience and is dependent on the material used. Construction and design are subject to technical alterations, errors and printing errors excepted.





The tried and tested BMS-cooling-system – more cooling power via two hydraulically driven fans.



More power at the push of a button. Powerbull mode as standard equipment.

AVAILABLE  
IN MODELS



STANDARD

## BMS SETS STANDARDS. HIGH-QUALITY EQUIPMENT AS STANDARD.

- ✓ More power in the powerbull mode
- ✓ Adjustable regulation of mixing time
- ✓ Safety shutdown at the dome grid
- ✓ Automatic 2-bar shutdown
- ✓ Easy belt replacement at the mixer
- ✓ Mixing vessel from in-house manufacturing
- ✓ Stable and long-lasting stainless steel hood
- ✓ Highly rust resistant KTL-coated frame
- ✓ Refuelling made easy, tank filler neck on the outside
- ✓ Stable fenders suited for deposal
- ✓ Lockable toolbox
- ✓ Integrated working light
- ✓ Height adjusting coupling device
- ✓ Sturdy chassis with mechanical overrun brakes and central height adjustment
- ✓ Sound power level according to guideline 2000/14/EG
- ✓ High-strength wear plates



FEEDER



FEEDER /  
SCRAPER

## BMS ALPHA CR



### ADVANTAGES. **ADDITIONNAL EQUIPMENT.**

- + Longlife plates (8 mm thick)
- + High-strength reinforced plates (10 mm thick)
- + Steel or plastic dished heads
- + Two galvanized filter cages for the cooling system, provided with a magnetic base and filter caps
- + Registration for 100 km/h
- + Spray pistol/ cleaning pistol
- + Working light 108 watt LED
- + GPS tracking system
- + Special paintings/ customer labelling
- + Hopper attachment Styrofoam
- + Spare wheel holder
- + Rear canvas
- + Lifting eye
- + Wear track for feeder edge
- + Silo model



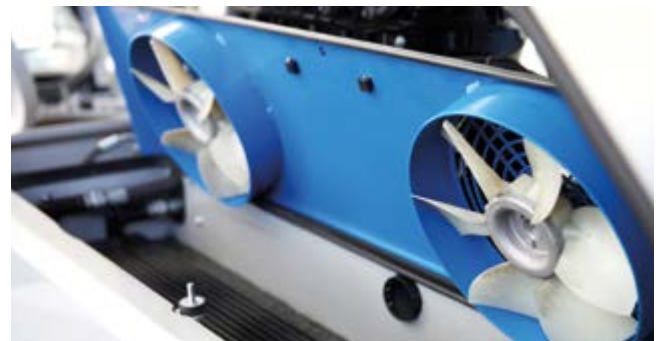
# alpha<sup>Z3</sup>

**EXPORT MACHINE**  
Does not meet the requirements of the EU exhaust emissions standards



## ALPHA Z3. PROVEN TECHNOLOGY – TOP PERFORMANCE.

The machine impresses with quality, modern technology and top performance. The alpha Z3 is equipped with the patented BMS cooling system. The cooling power is generated by two hydraulically driven fans. The 3-cylinder Deutz diesel engine with 36.5 kW is powerful and high-performance. The compressor developed by BMS is tailor-made and optimally designed for the alpha Z3. Whoever decides on an alpha Z3 will receive a screed machine of the highest quality – made in Germany. It is the right product for tough use on the construction site.



Patented cooling system

## TECHNICAL FACTS

	STANDARD	FEEDER	FEEDER/SCRAPER
max. Conveyance pressure	8,5 bar	8,5 bar	8,5 bar
Conveying distance*	200 m	200 m	200 m
Conveyor height*	30 floors	30 floors	30 floors
Compressor	BMS > 5 m <sup>3</sup> /min	BMS > 5 m <sup>3</sup> /min	BMS > 5 m <sup>3</sup> /min
Drive motor	Deutz D2011 L03 36,5 kW	Deutz D2011 L03 36,5 kW	Deutz D2011 L03 36,5 kW
Chassis/Axle	2,000 kg	2,000 kg	2,000 kg
Weight (depending on equipment)	1,760 kg	1,830 kg	1,980 kg
Length	4,620 mm	4,830 mm	4,830 mm
Width	1,555 mm	1,555 mm	1,555 mm
Height	1,585 mm	2,360 mm	2,700 mm
Fill level	920 mm	450 mm	450 mm
max. grain size	16 mm	16 mm	16 mm
Pressure joint	VT 70	VT 70	VT 70
Feeder volume	–	310 litres	310 litres
Tank capacity	75 litres	75 litres	75 litres

\*The data is based on experience and is dependent on the material used. Construction and design are subject to technical alterations, errors and printing errors excepted.



Pivoting safety guard



Safety shutdown dome grid at the inner compartment



Easy belt replacement at the mixer



**AVAILABLE IN MODELS**



**STANDARD**



**FEEDER**



**FEEDER / SCRAPER**

IMPROVED SAFETY. **INCOMPARABLE COMFORT.**

- ✓ Safety shutdown at the dome sieve
- ✓ Automatic 2-bar shutdown
- ✓ Easy belt replacement at the mixer
- ✓ Mixing vessel from in-house manufacturing
- ✓ Stable and long-lasting stainless steel hood
- ✓ Highly rust resistant EPD-coated frame
- ✓ Refuelling made easy, tank filler neck on the outside
- ✓ Stable fenders suited for disposal
- ✓ Lockable toolbox
- ✓ Integrated working light
- ✓ Height adjusting coupling device
- ✓ Sturdy chassis with mechanical overrun brakes and central height adjustment
- ✓ Sound power level according to guideline 2000/14/EG
- ✓ High-strength wear plates

## BMS ALPHA Z3

GET MORE FOR YOUR MONEY.

### ADDITIONAL EQUIPMENT.



- + Adjustable regulation of mixing time
- + Longlife plates (8 mm thick)
- + High-strength reinforced plates (10 mm thick)
- + Plastic dished heads
- + Two galvanized filter cages for the cooling system, provided with a magnetic base and filter caps
- + Spray pistol/cleaning pistol
- + Special paintings
- + Customer labelling
- + Lifting eye nuts
- + Rear canvas



# alpha<sup>Z4</sup>

**EXPORT MACHINE**  
Does not meet the requirements  
of the EU exhaust emissions  
standards



## ALPHA Z4. IMPROVED PERFORMANCE DUE TO ROTATION SPEED.

Economical, robust and user-friendly:

Alpha Z4 is especially suited for big projects: It is equipped with a powerful 4-cylinder Deutz engine of 46 kW that is very efficient and robust. Of course, the engine complies with current emission regulations. Outgoing air noises of the fan have been reduced by 60 percent.

Alpha Z4 is the right choice for anyone needing to pump quickly despite greater hose lengths.



## TECHNICAL FACTS

	STANDARD	FEEDER	FEEDER/SCRAPER
Max. Conveyance pressure	8,5 bar	8,5 bar	8,5 bar
Conveying distance*	200 m	200 m	200 m
Conveyor height*	30 floors	30 floors	30 floors
Compressor	BMS > 5 m <sup>3</sup> /min	BMS > 5 m <sup>3</sup> /min	BMS > 5 m <sup>3</sup> /min
Drive motor	Deutz D2011 L04 46 kW	Deutz D2011 L04 46 kW	Deutz D2011 L04 46 kW
Chassis / Axle	2,000 kg	2,000 kg	2,000 kg
Weight (depending on equipment)	1,780 kg	1,850 kg	2,000 kg
Length	4,620 mm	4,830 mm	4,830 mm
Width	1,555 mm	1,555 mm	1,555 mm
Height	1,585 mm	2,360 mm	2,700 mm
Fill level	920 mm	450 mm	450 mm
Max. grain size	16 mm	16 mm	16 mm
Pressure joint	VT 70	VT 70	VT 70
Feeder volume	–	310 litres	310 litres
Tank capacity	75 litres	75 litres	75 litres

## IMPROVED SAFETY. **INCOMPARABLE COMFORT.**

- ✓ Safety shutdown at the dome sieve
- ✓ Automatic 2-bar shutdown
- ✓ Easy belt replacement at the mixer
- ✓ Mixing vessel from in-house manufacturing
- ✓ Stable and long-lasting stainless steel hood
- ✓ Highly rust resistant EPD-coated frame
- ✓ Refuelling made easy, tank filler neck on the outside
- ✓ Stable fenders suited for disposal
- ✓ Lockable toolbox
- ✓ Integrated working light
- ✓ Height adjusting coupling device
- ✓ Sturdy chassis with mechanical overrun brakes and central height adjustment
- ✓ Sound power level according to guideline 2000/14/EG
- ✓ High-strength wear plates



Refuelling made easy



Fender with additional valve



Height adjustable coupling device



Integrated working light

## BMS ALPHA Z4

DEVELOPED FOR MEGA PROJECTS  
**ALPHA Z4 POWERBULL**

- + More power
- + Extra strong performance
- + Up to 6 m<sup>3</sup>/min air capacity

## GET MORE FOR YOUR MONEY. **ADDITIONAL EQUIPMENT.**



- + Adjustable regulation of mixing time
- + Longlife plates (8 mm thick)
- + High-strength reinforced plates (10 mm thick)
- + Plastic dished heads
- + Two galvanized filter cages for the cooling system, provided with a magnetic base and filter caps
- + Spray pistol/cleaning pistol
- + Special paintings
- + Customer labelling
- + Lifting eye nuts
- + Rear canvas





# alpha<sup>CR</sup> STYROPOR



## ALPHA CR STYROPOR. FOR MULTIPLE USE.

BMS alpha CR for Styrofoam has been constructed for the economical mixing and laying of light floor screed materials such as Styrofoam for insulation purposes. BMS alpha CR for Styrofoam is equipped with a 650 litres mixing vessel. The large vessel allows for light screed floor materials to be laid quicker and more efficiently. Additionally, the Styrofoam machine disposes of special filter cages for the alpha cooling system to prevent the Styrofoam from clogging the fans. BMS alpha CR for Styrofoam is particularly efficient with Styrofoam units of 500 litres.



## TECHNICAL FACTS

	STYROPOR	EQUIPMENT FEATURES
Conveyance pressure	8.5 bar	<ul style="list-style-type: none"> <li>• 650 litres mixing vessel, 10 mm wall thickness, coated with high-strength wear plates, large funnel, additional maintenance lid, specific mixer.</li> <li>• DEUTZ TD 2.2. 44.5 kW, High-performance compressor with max 6 m<sup>3</sup>/min air pressure performance, max. 8.5 bar.</li> <li>• Cooling system with two hydraulically driven fans and specific filter cages preventing clogging of the fans with Styrofoam.</li> <li>• Raised chassis suspension with a sturdy axle and a large brake system.</li> </ul>
Conveying distance*	200 m	
Conveyor height*	30 Floors	
Compressor	BMS up to 6 m <sup>3</sup> /min	
Drive motor	DEUTZ TD 2.2 44.5 kW	
Chassis/Axle	2,500 kg	
Weight (depending on equipment)	2,200 kg	
Length	4,500 mm	
Width	1,500 mm	
Height	1,710 mm	
Fill level	920 mm	
Max. grain size	16 mm	
Pressure joint	VT 70	
Feeder volume	–	
Tank capacity	75 litres	

\* All data is based on experience and is dependent on the material used. Construction and design are subject to technical alterations, errors and printing errors excepted.



## IMPROVED SAFETY. **INCOMPARABLE COMFORT.**

- ✓ Safety shutdown at the dome sieve
- ✓ Easy belt replacement at the mixer
- ✓ Mixing vessel from in-house manufacturing
- ✓ Stable and long-lasting stainless steel hood
- ✓ Highly rust resistant KTL-coated frame
- ✓ Refuelling made easy, tank filler neck on the outside
- ✓ Stable fenders suited for disposal
- ✓ Lockable toolbox
- ✓ Integrated working light
- ✓ Height adjusting coupling device
- ✓ Sturdy chassis with mechanical overrun brakes and central height adjustment
- ✓ 2,5 t axle as standard equipment (standard)
- ✓ Sound power level according to guideline 2000/14/EG
- ✓ High-strength wear plates
- ✓ Two galvanized filter cages for the cooling system, provided with a magnetic base and filter caps

## BMS ALPHA CR STYROPOR



### ADVANTAGES. **ADDITIONAL EQUIPMENT.**

- + Automatic water dosage, adjustable water quantities
- + Large funnel facilitating filling in 500 litre sacks
- + Silo rotary flap – for quick filling of the vessel
- + Additional manhole cover for maintenance at the vessel
- + Additional cleaning outlet at the vessel
- + Registration for 100 km/h
- + Spray pistol/ cleaning pistol
- + Working light 108 watt LED
- + Special paintings/ customer labelling
- + GPS tracking system
- + Spare wheel holder
- + Rear canvas









POWERFUL FUTURE.

## PRODUCTS WITH ELECTRIC MOTOR.

VERY ECONOMICAL. **NO FUEL CONSUMPTION.**

The electrically driven screed machines run on conventional construction site power.

VERY QUIET. **NO CO<sup>2</sup> EMISSIONS.**

Work possible anytime without noise disturbance.

There is no vehicle exhaust or particular matter pollution.

VERY **ECONOMICAL.**

The machines amortise much quicker due to the use of construction site power.

VERY LOW **MAINTENANCE COSTS.**

Service jobs on the motor are not necessary..

HIGHEST **SAFETY STANDARDS.**

Tested and certified by German TÜV.

HIGH QUALITY. **FIRST-CLASS WORKMANSHIP.**

All screed floor machines are functional and sturdy – made in Germany.

LONG-LASTING **STAINLESS STEEL HOODS.**

We use stainless steel of the highest quality.

Vessel and storage unit are manufactured in-house.

## BMS ALPHA E32 VARIO. **ADJUSTABLE IN 4 SETTINGS.**

The electrically driven screed machines adapts flexibly to the needs of the construction site. It can be adjusted in 4 settings: 25A – 32A – 45A – 63A.

The alpha E32 Vario is interesting for screed installers that work construction sites from “small” to “big” sizes. The machine stands out because it can be fed with up to 63 Ampere. Advantage: If there is a 63 amp plug on the construction site, the performance can be empowered so that considerably longer hoses may be used. Since power distributors on smaller construction sites are only secured with 25 Ampere instead of 32, BMS has designed the electric machine so that it runs already at 25 Ampere input current. Another advantage of the E32 Vario.

The use of a frequency converter makes the electric motor particularly efficient. Due to its 4-settings control technology, the machine can be used flexibly on construction sites, independently from the site power supply.



## TECHNICAL FACTS

	STANDARD	FEEDER	FEEDER / SCRAPER
Conveyance pressure	up to 8 bar	up to 8 bar	up to 8 bar
Conveying distance*	up to 140 m	up to 140 m	up to 140 m
Reservoir	580 litre	580 litre	580 litre
Compressor	up to 3 m <sup>3</sup> / min	up to 3 m <sup>3</sup> / min	up to 3 m <sup>3</sup> / min
Drive motor	up to 20 kW / 5.5 kW	up to 20 kW / 5.5 kW	up to 20 kW / 5.5 kW
Chassis/Axle	2,000 kg	2,000 kg	2,000 kg
Weight (depending on equipment)	1,780 kg	1,920 kg	1,990 kg
Length	4,620 mm	4,830 mm	4,830 mm
Width	1,555 mm	1,555 mm	1,555 mm
Height	1,585 mm	2,360 mm	2,700 mm
Fill level	920 mm	450 mm	450 mm
Max. grain size	16 mm	16 mm	16 mm
Pressure joint	VT 70	VT 70	VT 70
Feeder volume	–	310 litres	310 litres

\* The data is based on experience and is dependent on the material used. Construction and design are subject to technical alterations, errors and printing errors excepted.

## HIGHEST QUALITY. **LATEST TECHNOLOGY.**

- ✓ Safety shutdown at the dome grid
- ✓ Automatic 2-bar shutdown
- ✓ Mixing vessel from in-house manufacturing
- ✓ Stable and long-lasting stainless steel hood
- ✓ Highly rust resistant KTL-coated frame and vessel
- ✓ incl. cable holder and 30 m electric cable
- ✓ Stable fenders suited for disposal
- ✓ Lockable toolbox
- ✓ Integrated working light
- ✓ Height adjusting coupling device
- ✓ Sturdy chassis with mechanical overrun brakes and central height adjustment
- ✓ Adjustable regulation of mixing time

AVAILABLE  
IN MODELS



**STANDARD**



**FEEDER**



**FEEDER /  
SCRAPER**



Performance adjustable  
in 4 settings



Cable holder for easy winding  
of the supply cable.



The powerful  
compressor unit

## BMS ALPHA E32 VARIO



### ADVANTAGES. **ADDITIONAL EQUIPMENT.**

- + Silo construction and control
- + Longlife plates (8 mm thick)
- + High-strength reinforced plates (10 mm thick)
- + Steel or plastic dished heads
- + Registration for 100 km/h
- + Spray pistol/cleaning pistol
- + Working light 108 watt LED
- + Special paintings/customer labelling
- + Spare wheel holder
- + Wear track for feeder edge
- + Hopper attachment Styrofoam
- + Lifting eye
- + Rear canvas





## BMS ALPHA E63. **FULL ELECTRIC POWER.**

The alpha E63 has been developed particularly for the use on construction sites with conventional electricity supply. With its frequency regulated three-phase electric motor the alpha E63 can be connected to any power distribution provided on construction sites.

Operational safety is guaranteed at all times. Performance may be adjusted flexibly from 50 to 63 Ampere on site. The 30 kW variable frequency electric motor lends alpha E63 all its power without producing exhaust pollution or CO<sub>2</sub> emissions. Moreover, noise development is reduced significantly.



## TECHNICAL FACTS

	STANDARD	FEEDER	FEEDER / SCRAPER
Conveyance pressure	8 bar	8 bar	8 bar
Conveying distance*	180 m	180 m	180 m
Compressor	up to 4.5 m <sup>3</sup> /min	up to 4.5 m <sup>3</sup> /min	up to 4.5 m <sup>3</sup> /min
Drive motor	30 kW	30 kW	30 kW
Chassis/Axle	2,000 kg	2,000 kg	2,000 kg
Weight (depending on equipment)	1,640 kg	1,780 kg	1,870 kg
Length	4,620 mm	4,830 mm	4,830 mm
Width	1,555 mm	1,555 mm	1,555 mm
Height	1,585 mm	2,360 mm	2,700 mm
Fill level	920 mm	450 mm	450 mm
Max. grain size	16 mm	16 mm	16 mm
Pressure joint	VT 70	VT 70	VT 70
Feeder volume	–	310 litres	310 litres

\* The data is based on experience and is dependent on the material used. Construction and design are subject to technical alterations, errors and printing errors excepted.

## FROM EXPERTS. **THOUGHT THROUGH TO THE SMALLEST DETAIL.**

AVAILABLE  
IN MODELS

- ✓ Safety shutdown at the dome grid
- ✓ Automatic 2-bar shutdown
- ✓ Easy belt replacement at the mixer
- ✓ Mixing vessel from in-house manufacturing
- ✓ Stable and long-lasting stainless steel hood
- ✓ Highly rust resistant KTL-coated frame
- ✓ Stable fenders suited for deposal
- ✓ incl. cable holder and 30 m electric cable
- ✓ Sturdy mudguards as storage area
- ✓ Lockable toolbox
- ✓ Integrated working light
- ✓ Height adjusting coupling device
- ✓ Sturdy chassis with mechanical overrun brakes and central height adjustment
- ✓ High-strength reinforced plates
- ✓ Automatic regulation of mixing time



STANDARD



FEEDER



FEEDER /  
SCRAPER



The 30 kW variable frequency electric motor



Cable holder for easy winding of the supply cable.

## BMS ALPHA E63 PLUS



### ADVANTAGES. **ADDITIONAL EQUIPMENT.**

- + Longlife plates (8 mm thick)
- + High-strength reinforced plates (10 mm thick)
- + Steel or plastic dished heads
- + Galvanized filter cage for the cooling system, provided with a magnetic base and filter caps
- + Registration for 100 km/h
- + Spray pistol/cleaning pistol
- + Working light 108 watt LED
- + Special paintings/customer labelling
- + Spare wheel holder
- + Hopper attachment Styrofoam
- + Wear track for feeder edge
- + Lifting eye
- + Rear canvas
- + Silo model



## ALPHA CR FLUID. EFFICIENT AND POWERFUL.

The fluid screed machine has been developed based on the alpha CR series. It has been designed for screed installers with particularly high demands on their machine. The alpha CR fluid is equipped with a 44,5 kW DEUTZ engine. Due to its 2,2 litres displacement, the engine has a high rotational speed. Apart from the trendsetting engine technology, BMS has equipped this system with the new eco-mode. When no material is conveyed, the machine engine speed (RPM) automatically. For this reason, the alpha CR fluid is particularly quiet, economic and efficient. It meets the new EU emission regulation Stage V.

The machine is also equipped with the proven hydraulic system developed by BMS. It is robust and powerful. The hydraulic pump is activated directly and works very efficiently. Conveying speed is continuously adjustable. The display shows all relevant data. Moreover, the additional agitator shaft in the hopper keeps the material in motion preventing the mixing material from setting down. Like all alpha machines, the system is equipped with the tried and tested BMS cooling system.



DEUTZ TD 2.2 engine with hydraulic unit



## TECHNICAL FACTS

	STANDARD
Conveyance pressure	40 bar
Conveying distance*	200 m
Conveyor height*	30 Floors
Output*	up to 20 m <sup>3</sup> /h
Drive motor	DEUTZ TD 2.2 44.5 kW
Chassis/Axle	2,000 kg
Weight (depending on equipment)	1,500 kg
Length	4,300 mm
Width	1,500 mm
Height	1,590 mm
Fill level	930 mm
Volume hopper	400 litres
Max. grain size	12 mm
Tank capacity	75 litres



\* All data is based on experience and is dependent on the material used. Construction and design are subject to technical alterations, errors and printing errors excepted.



Robust 6-channel radio remote control



Display – protected by bulletproof glass



Additional agitator shaft in the 400 l hopper



The proven hydraulic system



## MORE SAFETY. **INCOMPARABLE COMFORT.**

- ✓ Display for conveying speed
- ✓ Safety shutdown at the dome grid
- ✓ Stable and long-lasting stainless steel hood
- ✓ Highly rust resistant KTL-coated frame and hopper
- ✓ Refuelling made easy, tank filler neck on the outside
- ✓ 6-channel radio remote control
- ✓ Optional right-handed or left-handed rotation of the screw conveyor
- ✓ Additional agitator shaft in the hopper
- ✓ Vibrator for the grid
- ✓ Conveying speed continuously adjustable
- ✓ Lockable toolbox
- ✓ Integrated working light
- ✓ Height adjusting coupling device
- ✓ Sturdy chassis with mechanical overrun brakes and central height adjustment
- ✓ Sound power level according to guideline 2000/14/EG

## BMS ALPHA CR FLUID

DEVELOPED FOR MEGA PROJECTS  
**ALPHA CR FLUID XL**

- + large screw conveyor 2L8
- + extra large hopper
- + more powerful hydraulic motor



### ADVANTAGES. **ADDITIONAL EQUIPMENT.**

- + Power generator 5,5 kW/16 kW
- + Feeder or Feeder / Scraper
- + Pressure gauge in the pressure joint
- + Dry-run protection
- + Registration for 100 km/h
- + Working light 108 watt LED
- + Special paintings/ customer labelling
- + GPS tracking system
- + Rear canvas
- + Spare wheel holder





BMS FLUID E32. **SMALL – COMPACT – ELECTRIC.**

The small fluid screed machine is suited for pumping out fluid screed material. The electric machine is driven by a 7,5 kW electric motor. It can be connected to any power distribution on construction sites providing a 400 volts /32 ampere three-phase-socket.

The BMS FLUID E32 is of interest for screed installers who are not permanently working on big projects. The machine covers a pumping distance of 100 m and supplies a conveying capacity of up to 10 m³/h.

All advantages in a nutshell: no maintenance, no costs for diesel fuel, no brake. Towing only requires a driving license for passenger cars. All models dispose of registration for 100 km/h. Large opening for easy cleaning, sturdy pivoting grid.



Electric motor 7,5 kW 16A / 32A

TECHNICAL FACTS

	STANDARD
Motor	Electric motor 7.5 kW 16A / 32A
Conveying speed	continuously adjustable
Stator/rotor	„RED FIRE – BMS“
Output*	up to 10 m³/h
Volume hopper	approx. 120 litres
Weight	below 450 kg
Chassis without break	height adjustable, registration for 100 km/h

\* The data is based on experience and is dependent on the material used. Construction and design are subject to technical alterations, errors and printing errors excepted.



The 120 litres hopper



Red Fire screw conveyor



Large opening for cleaning

## THE SMALL PUMP STATION.

### CONVINCING ELECTRICAL ENGINEERING.

- ✓ 7.5 kW electric motor, regulated by frequency converter, 400 Volt
- ✓ Connectable to any construction site power distribution with 16A / 32A
- ✓ Optional right-handed or left-handed rotation of the screw conveyor
- ✓ Large opening for easy cleaning
- ✓ Sturdy pivoting grid
- ✓ Stable chassis
- ✓ Safety guard – safety shut-down
- ✓ Lighting in 12 Volt or 24 Volt
- ✓ Ball coupling or DIN-towing eye
- ✓ 4-channel radio remote control



With convenient remote control

## BMS FLUID E32



### ADVANTAGES. **ADDITIONAL EQUIPMENT.**

- + Vibrator for the grid
- + Pressure gauge in the pressure joint
- + Dry-run protection
- + Registration for 100 km/h
- + Special paintings/customer labelling
- + Spare wheel holder





# BMS FLUID E63

## BMS FLUID E63. **COMPACT – ECONOMICAL – ELECTRIC.**

This fluid screed machine is the larger version of the electrically driven FLUID E 32 which has been successfully on the market for years. It is suited for pumping out material on the construction site. The electric machine is driven by a 22 kW electric motor. It can be connected to any power distribution on construction sites providing a 400 volts /32 ampere three-phase-socket. If there is no 63 Ampere connection available, the machine also runs with 32 Ampere power, however, the performance of the machine will be less powerful. The machine covers a pumping distance of 150 m and supplies a conveying capacity of up to 15 m³/h. This makes her almost equal to the 3-cylinder-diesel pump. The machine runs very quietly and economically at a very good price-performance ratio.

All advantages in a nutshell: no maintenance, no costs for diesel fuel, no brake. Towing only requires a driving license for passenger cars. All models dispose of registration for 100 km/h. Large opening for easy cleaning, very sturdy pivoting grid.



The 22 kW Electric motor



With convenient remote control

## TECHNICAL FACTS

STANDARD	
<b>Motor</b>	Electric motor 22 kW 32A / 63A
<b>Conveying speed</b>	continuously adjustable
<b>Stator/rotor</b>	„RED FIRE – BMS“
<b>Output*</b>	up to 15 m³/h
<b>Volume hopper</b>	approx. 120 litres
<b>Weight</b>	below 750 kg
<b>Chassis without break</b>	height adjustable, registration for 100 km/h Zulassung

\* All data is based on experience and is dependent on the material used. Construction and design are subject to technical alterations, errors and printing errors excepted.







Large opening for cleaning



Red Fire screw conveyor



The 120 litres hopper

## THE PRACTICAL PUMP STATION. **FOR FLUID SCREED APPLICATIONS.**

- ✓ 22 kW electric motor, regulated by frequency converter, 400 Volt
- ✓ Connectable to any construction site power distribution with 32A / 63A
- ✓ Optional right-handed or left-handed rotation of the screw conveyor
- ✓ Pressure gauge in the pressure joint
- ✓ Large opening for easy cleaning
- ✓ Sturdy pivoting grid
- ✓ Stable chassis
- ✓ Safety guard – safety shut-down
- ✓ Lighting in 12 Volt or 24 Volt, Ball coupling or DIN-towing eye
- ✓ 4-channel radio remote control

## BMS FLUID E63



### ADVANTAGES. **ADDITIONAL EQUIPMENT.**

- + Vibrator for the grid
- + Pressure gauge in the pressure joint
- + Dry-run protection
- + Registration for 100 km/h
- + Special paintings / customer labelling
- + Spare wheel holder



## SCREED LAYERS **SPECIAL MACHINERY**

YOUR SCREED MACHINE MUST MEET SPECIAL REQUIREMENTS?  
STANDARD MODELS WILL NOT DO FOR YOU?  
TAKING OUR POWERFUL CONSTRUCTIONS AS A MODEL,  
WE DEVELOP MADE-TO-MEASURE SOLUTIONS BASED ON YOUR  
PARTICULAR SPECIFICATIONS.

### BMS COMPULSORY MIXER. **FOR CONSTRUCTION AND INDUSTRY.**

We offer our mixing vessel for work on construction sites and for industrial use, depending on the purpose: drive and gear motors going from 5.5 kW to 24 kW, vessel capacity 130 litres to 650 litres.



Equipped with chassis for transportation with a towing vehicle.



Equipped with railing and lifting-eye-nuts for truck loading.



For big jobs: with 650 litres vessel

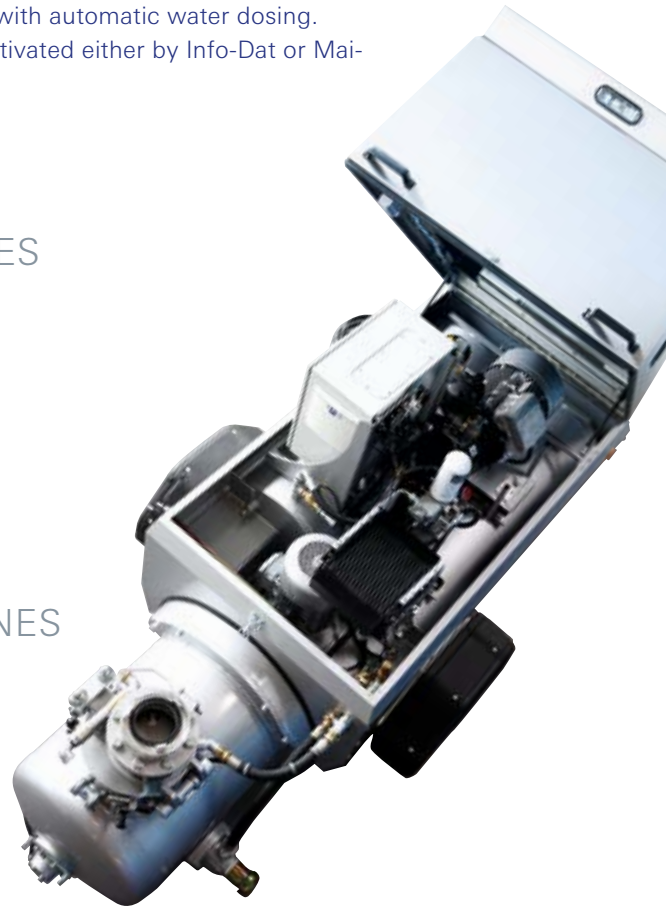
# BMS. EXPERT FOR SILO MACHINES.

We produce silo machines in various versions. You may choose between hydraulic, pneumatic or electric control systems for the Silo flap. All Silo machines are equipped with automatic water dosing. Each of the alpha screed machines may be converted for silo use. It is activated either by Info-Dat or Mai-control.

## BMS SINGLE COMPARTMENT SILO MACHINES



## BMS DOUBLE COMPARTMENT SILO MACHINES



## ACTIVATED BY INFO-DAT-CONTROL SYSTEM



## PREPARATION FOR MAI-CONTROL SYSTEM



Any Silo model can additionally be equipped with a conventional lid. The machine may then be equally used as a standard model.



# INDIVIDUALITY. SPECIAL PAINTINGS AND CUSTOMER LABELLING.

You have the choice. We design your screed machine according to your requirements.



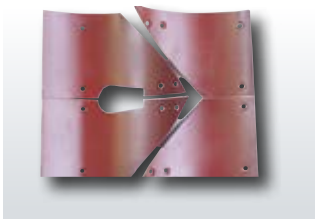


# ADDITIONAL EQUIPMENT. **ACCESSORIES – WEAR PARTS – SPARE PARTS.**

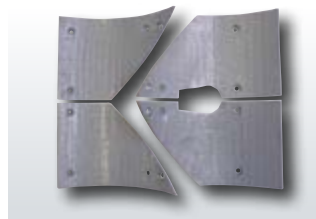
Use the large range of BMS equipment as well as of spare and wear parts.  
 Factory-fitted in original BMS-quality – mostly from our in-house manufacturing.  
 Ask for our detailed catalogues.



**Conveyor hoses / Couplings**  
 in various versions



**Longlife plates**  
 8mm thick,  
 highly wear resistant



**Reinforced plates**  
 Six-piece high-strength  
 reinforced plates  
 10 mm thick



**Steel dished heads**  
 highly wear resistant steel



**Plastic dished heads**  
 highly wear resistant  
 synthetic material



**Spray pistol/cleaning  
 pistol** for easy cleaning of  
 the floor screed conveyor



**Registration**  
 For 100 km/h



**Rear canvas**  
 for protection against dirt



**Lifting eye**  
 for safe lifting of charges



**GPS-tracking system**  
 for more control and safety



**Filter cages**  
 for operating Styrofoam



**Hopper attachment**  
 for Styrofoam bags, with rubber band, easy hinging



**High pressure cleaner,**  
 hydraulically driven



**Wear track**  
 for feeder edge



**Working light**  
 LED 108 watt



**Spare wheel holder**  
 with protective cover





NEW PRODUCT LINE TITAN

# FULLY AUTOMATIC SCREED SYSTEMS FOR CEMENT- AND FLUID SCREED

## **TITAN Z-LINE**

for processing cement screed

## **TITAN F-LINE**

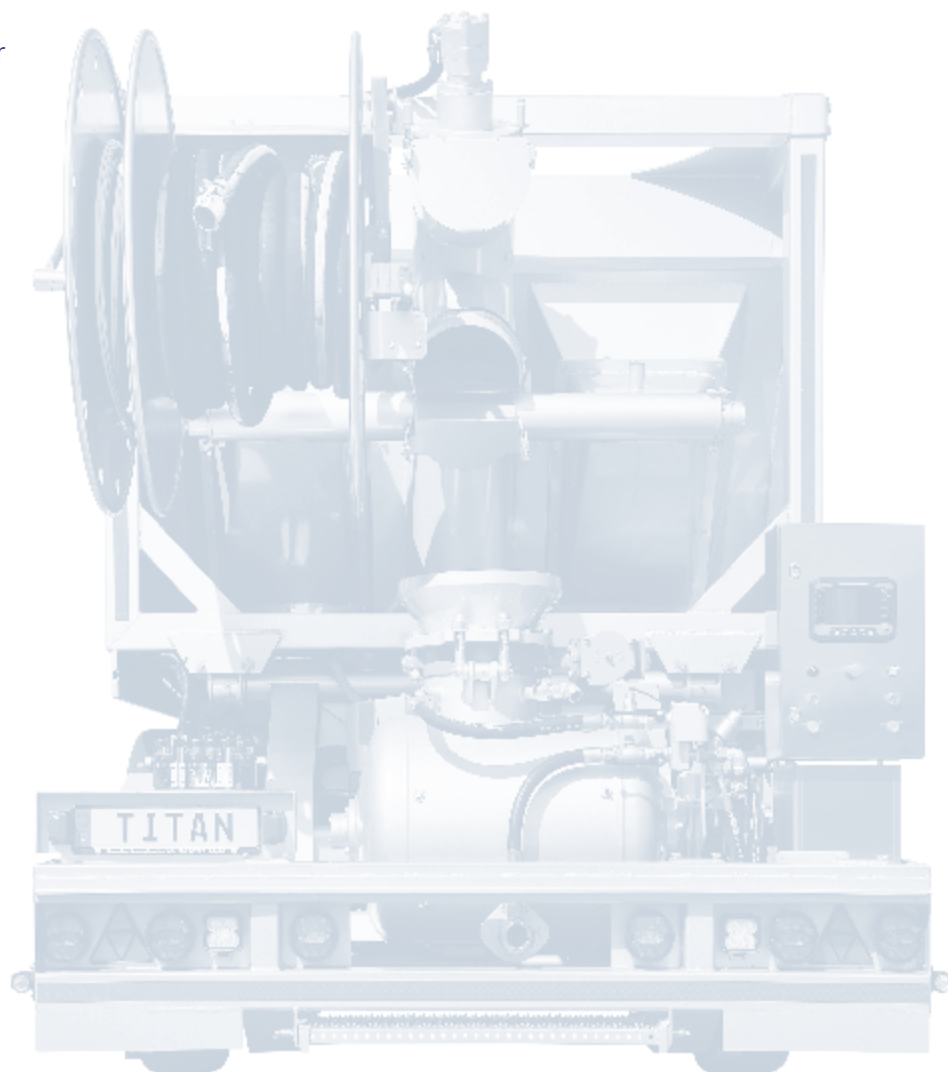
for processing fluid screed  
(in each case equally suited for  
processing Styrofoam)

## **TITAN X-LINE**

customised special designs

## **All models**

equally available as semitrailer  
or as 4-axle chassis 8x4.







# TITAN<sup>F</sup>

STAINLESS STEEL



**MIXING TANK**  
Easy to clean.



**CONTROL CABINET WITH CONTROL PANEL**

STAINLESS STEEL



Danfoss control of the latest generation.

**SCREW CONVEYORS**



Optionally with screw conveyor or conveyor belt.

**HOSE REEL**

STAINLESS STEEL



Hose reel (hydraulic driven) positioned in the rear.

**HIGH-PRESSURE CLEANER**



Included in the scope of services.



Mixing tank sealed with rubber rings.



STRONG. FAST. CLEAN.

## TITAN F – FULLY AUTOMATIC SCREED SYSTEM FOR FLUID SCREED.



### HIGH-GRADE STANDARD EQUIPMENT

- + Electric sliding roof
- + Storage compartment for accessories
- + Telescopic access ladder
- + High-pressure cleaner
- + Additive pump
- + Electric water heater
- + Expansion flap with injection device
- + Large LED working light

### ADDITIONAL FEATURES

- + Many technical configurations and individual configurations possible.

### DOUBLE-WALLED ALUMINIUM BODY



Body made to measure, modular system with 1, 2 or 3 chambers.

### COMPACT MACHINE TECHNOLOGY



44.5 kW DEUTZ diesel engine of the latest generation, Stage V.



With telescopic access ladder.

# TITAN<sup>2</sup>



CONTROL CABINET  
WITH CONTROL PANEL

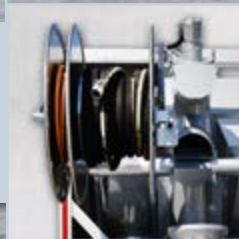


STAINLESS STEEL

Danfoss control of the latest generation.



HOSE REEL



STAINLESS STEEL

Hose reel positioned (hydraulic driven) in the rear.

HIGH PRESSURE  
CLEANER



Included in the scope of services.

STORAGE  
COMPARTMENT  
FOR ACCESSORIES



STAINLESS STEEL

Room for accessories. Continuous storage compartment with blinds and cargo safety system.

ALL MODELS AVAILABLE AS SEMI-TRAILERS AS WELL AS WITH 4-AXLE CHASSIS 8X4



**USER-FRIENDLY. TECHNICALLY PERFECT.  
TITAN Z. TILTING SYSTEM FOR CEMENT SCREED.**



**AS STANDARD**

- + Electric sliding roof
- + Storage compartment for accessories
- + Telescopic access ladder
- + High-pressure cleaner
- + Additive pump
- + Electric water heater
- + Expansion flap with injection device
- + Large LED working light

**ADDITIONAL FEATURES**

- + Many technical configurations and individual configurations possible.

**DOUBLE-WALLED ALUMINIUM BODY**



Body made to measure, modular system with 1, 2 or 3 chambers..

**COMPACT MACHINE TECHNOLOGY**



44.5 kW DEUTZ Latest generation diesel engine, Stage V.

**TWO TANKS**



STAINLESS STEEL

Fuel and hydraulic oil tank. With telescopic access ladder.

**IN THE FIGURE: TITAN Z – TILTING SYSTEM FOR CEMENT SCREED**



# INTERNATIONAL DEMAND. IN USE ON CONSTRUCTION SITES ALL OVER THE GLOBE.

BMS screed machines are in use in many regions all over the world. Rely on maximum performance – even under extreme conditions.

We have authorised dealers and contract workshops in many countries.



Bordeaux/France



Danzig/Poland



Hanover/Germany



Munich/Germany



Maldives



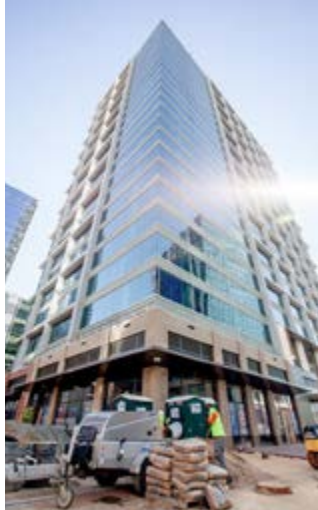
**SERVICE PARTNERS AND DEALERS  
IN MANY REGIONS WORLDWIDE.**



Frankfurt/Germany



Dubai/U.A.E.



Charlotte/USA



Düsseldorf/Germany



St. Petersburg/Russia



Bordeaux/Frankreich



Barcelona/Spain



China



Oman/Arabia



Rotterdam/Netherlands



Belgrad/Serbia



Kitzbühel/Austria

# YOUR CONTACTS.

## WE WILL PERSONALLY ASSIST YOU.

### SALES GERMANY



Southern area  
Armin Bürgler  
+49 173 82 52 20 0



Northern area/  
Eastern area  
Sebastian Jürgens  
+49 173 25 22 13 3



Western area  
Frank Motsakos  
+49 173 34 53 00 7



### WORKSHOP



Johannes Heymann  
Phone: +49 (0) 5242 9646-17  
werkstatt@bmsbaumaschinen.de

### SPARE PARTS STORE



Daniel Ivanovic  
Phone: +49 (0) 5242 9646-15  
versand@bmsbaumaschinen.de





## SALES INTERNATIONAL



Do you have any questions?  
Looking for an offer?  
Are you looking for advice?

Phone: +49 (0) 5242 9646-0  
[info@bmsbaumaschinen.de](mailto:info@bmsbaumaschinen.de)





**BMS Bau-Maschinen-Service AG**

Daimlerstraße 10

D-33378 Rheda-Wiedenbrück

Phone: +49 (0) 5242 9646-0

Fax: +49 (0) 5242 9646-29

E-Mail: [info@bmsbaumaschinen.de](mailto:info@bmsbaumaschinen.de)



[www.bmsbaumaschinen.de](http://www.bmsbaumaschinen.de)